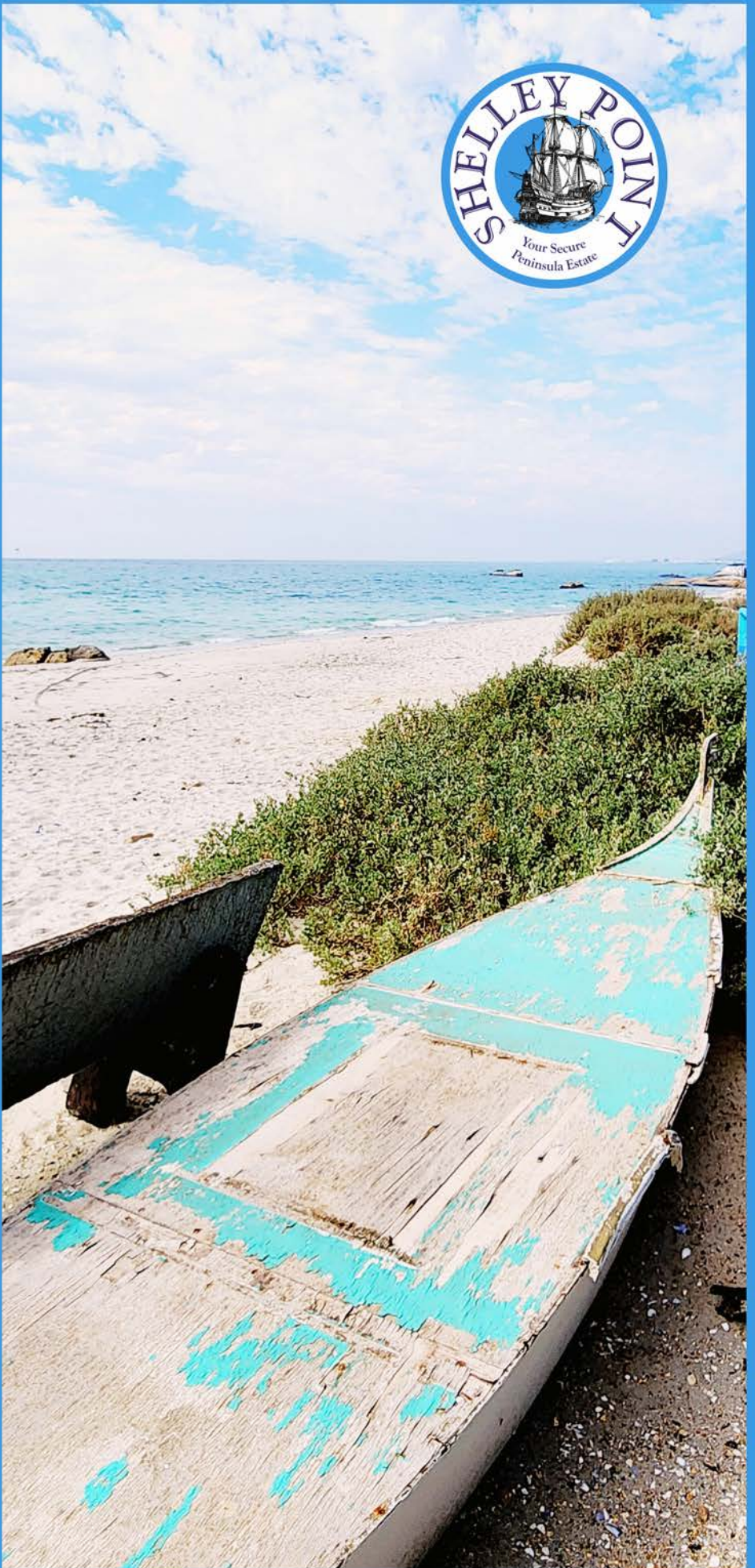


TO THE POINT

SHELLEY POINT
HOME OWNERS
ASSOCIATION
NEWSLETTER

A community
newsletter
dedicated to
fostering a sense
of community and
the free flow of
information at
Shelley Point

SUMMER
2024



Editor's letter

Dear Members and Residents

As we approach the end of the year, we reflect on how swiftly time has passed. 2024 seemed to fly by in the blink of an eye, yet it was a year marked by significant moments for our community. We faced challenges like the devastating fires and the resulting loss, but also celebrated triumphs such as the birth of our beautiful Community Centre, new road infrastructure, and a substantial growth in residential properties in both the estate and St Helena Bay.

Now, with the festive season upon us and Christmas around the corner, it's the perfect time to pause, acknowledge our achievements, and cherish time with loved ones.

Planting a garden is believing in tomorrow and our SP residents bear witness to this philosophy with their beautiful gardens featured in this edition.

The newly formed Shelley Point Social Events Club (SPSEC) is buzzing with ideas and activities for this December. Enjoy the read and what Angelique Dermit and her team have in store for you.

If you have aspirations to expand your business or maybe generate an income from a hobby in 2025, keep in mind that residents have the opportunity to advertise services and products in this newsletter, subject to guidelines which can be found [on the website](#).

Advertorials (wording + photos, following the newsletter editorial style)

Only Members:

R250 half a page | R500 full page

Classified advertisements

(Any interested parties)

30 words

R60

Deadline for Autumn newsletter submissions - 10 Jan to 10 Feb 2025.

What do you wish for in 2025? May it include health, spiritual wealth and abundance for you and yours.

Wishing you all a joyful holiday season and a prosperous New Year!

Kobus Badenhorst | [AboutBrandingpr@gmail.com](mailto>AboutBrandingpr@gmail.com)



To celebrate the launch of our Classifieds section, one lucky Shelley Point Resident stands the chance to win a Milkwood tree, the tree of the year, and two bags of compost. Go to the Classifieds page and click on the competition link to enter.



Chairperson's brief

CARLOS GOMES

AGM:

By the time this Newsletter is circulated you would have received advice of and relevant supporting documentation via Residentia Trust pertaining to the AGM schedule for 13:00 hrs (CAT) Friday 20 December 2024 at the NG Church Hall St. Helena Bay and on-line via the WeconnectU / Meetingspace Platform.

- Members attending "in-person" are collegially requested to arrive at the venue between 12:15 and 12:30 hrs. in order to complete attendance and voting registration protocols. Please ensure your mobile device is fully charged as it is an integral part of the voting process.
- Spouses / Life partners of a Registered Owner may, as a courtesy attend the meeting but will not be able to address the meeting or vote. Where a property is registered in the name of more than one person (eg. husband & wife) they may both participate in the meeting but the voting platform will only accept input from one person.

The "on-line" platform will open from circa 12:40 hrs (CAT).

Members are collegially requested to peruse all circulated documents as the Meeting will be held on the supposition that all documentation has been read.

Insurance Claim:

- As alluded to in the last Newsletter the SPHOA declared a dispute with both its Broker (PSG) and the Insurer (CIA).
- Following unsuccessful protracted negotiations with PSG, the SPHOA decided to submit its dispute to the FAIS Ombud for adjudication. A fair and amicable settlement, much improved from the original offer by PSG, was with facilitation by the FAIS Ombud, agreed to between the parties.
- The dispute is with CIA (at the time of drafting this) and before the Ombudsman for adjudication.
- This matter will serve before the AGM for further disclosure.

In the interim the SPHOA, in accordance with its Constitutional mandate, has:

- Contracted a professional Evaluator to determine the asset values of the SPHOA.
- Appointed a new Broker specialising in Community Schemes.
- Appointed a new Insurer to cover the asset value in accordance with the findings of the Evaluator.
- The process was conducted in accordance with the SPHOA's Procurement Policy.
- The new Insurance Policy came into effect from 1 November 2024 and is tabled for ex post facto consideration and approval at the AGM.

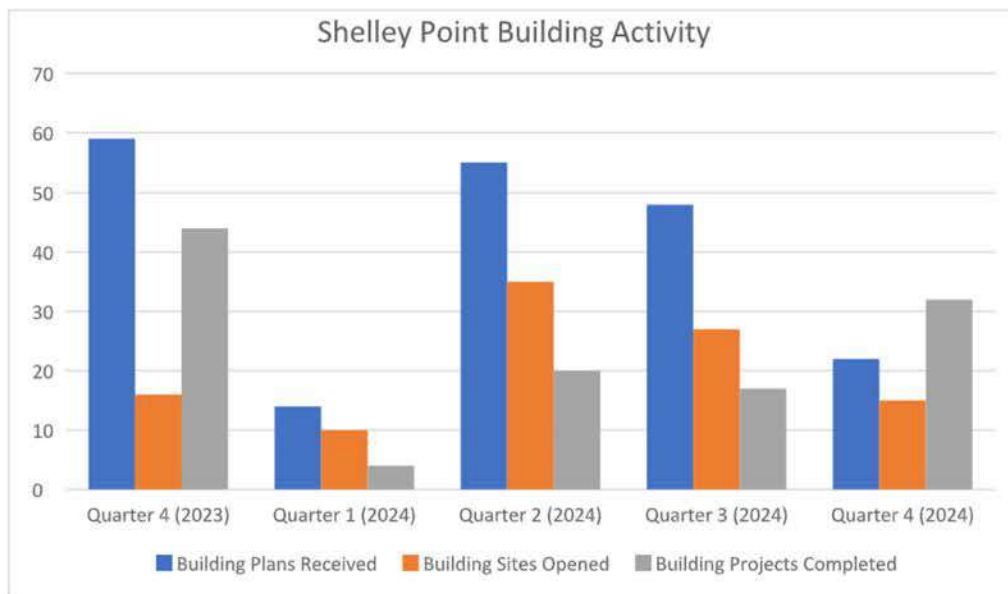
In closing, I would like to wish you and your loved ones a blissful and relaxing Festive Season and a prosperous 2025.

Building activity at Shelley Point

ALDO FOURIE

Judging from the graphical data below the most noticeable shift is the year-on-year comparison of the number of building plans submitted in the 4th Quarter of the year. Although Quarter 4 data is incomplete at this stage, there is a significant reduction in this category compared to last year. Does this potentially signal that we can expect a downward trend in the development rate? Only time will tell...

The number of new building sites is always slower during the last quarter and this number is not expected to change much as the construction shutdown period is almost upon us. Members and Residents can look forward to this "quiet" period between the period 16 December 2024 to 13 January 2025.



Quarter 4 (2024) figures are taken as of 11/11/2024
Building Activity Figures include Alterations & Additions to Existing Houses



RAINFALL REPORT

Wendy Ross-Marsh

August 34mm

September 11mm

October 20mm

Security

ALDO FOURIE



We are pleased to inform our Members that, after consultation with professional service providers, we have drafted an Emergency Preparedness Plan document which was duly approved by the Trustee Committee and incorporated into the Site Operating Procedure document. This document has been loaded onto the [SPHOA website](#). We encourage Members to familiarize themselves with this document.

At the time the Newsletter will be published the Shelley Point Volunteer Fire Team would have received their annual fire fighting training as well as First Aid training that was introduced for the first time this year. This was recommended by the Greater Cederberg Fire Protection Association of which SPHOA is a Member. Thank you to the Members of the team for your time and dedication in this regard.

It is that time of year again when all access registrations of domestic workers and gardeners will expire on the 31st of December 2024. In order to avoid any access restrictions or delays at the gates, please renew the registrations of the individual(s) providing these services to you. We will be extending the operating hours of our registration office from 08:00 to 17:00 (Mon-Fri) for the period 2 - 20 December 2024 to accommodate this process. All registered workers will be migrated onto our new facial recognition system.

The following process would need to be followed to ensure successful registration:

- It is recommended that the Homeowner or Permanent Resident be present at the registration office when workers are registered.
- New workers must provide their identification document upon registration.
- If you are unable to be present with your worker, you need to email the administration office in writing of any additions, removals or re-registration before the expiry date of registrations. admin@sphoa.co.za

Security | Holiday season reminder

ALDOFOURIE

We expect the festive season to be busier than ever before, and to ensure that Visitors and Residents coincide harmoniously during this period, a friendly reminder of the following:

Please arrange access for guests/visitors in advance by using your preferred method of communication:

- Whatsapp: 066 399 6596
- Phone: 022 742 1888 / 022 742 1380
- Email: shelleypointcontrol@gmail.com

Please adhere to rules relating to the use of our Estate roads.
Respect your fellow Shelley Pointers and respect SPHOA communal property and wildlife.
Please report all transgressions with the Security Control Room as soon as it occurs. We cannot resolve the issue if we are not aware of the issue.



Furniture Removal Vehicles

Please be reminded of the vehicle restrictions relating to furniture removal trucks. Only non-articulated Vehicles without trailers of the following specifications will be allowed:

- Maximum length: 10m (Changed from 9.1m)
- Maximum width: 2,6m
- Maximum gross mass: 26,000kg
- Maximum axle weight: 8,000kg
- Maximum height of 4,0m

Furniture removal trucks are only allowed to enter the Estate on Weekdays between 07:00 and 18:00 as per Clause 4.4.20.4 of the General Rules. Please notify our Security Manager in advance of the arrival of the furniture vehicle(s) and also clarify any uncertainties directly with him. This will avoid any delays or inconveniences upon arrival.

Seal encounter guidelines

FIONA MACDUFF



As we head towards the busy festive season, and full holiday homes, I would like to share a few words of advice for you, and your guests, concerning our Cape Fur Seals. Remember that seals are land mammals and only enter the sea to hunt, play and mate. They will often spend a whole day lying on the warm sand or rocks, trying to warm up. During this “resting” period they must be left alone.

DO:

- Maintain a distance from the animal. Preferably 20 – 30 metres away
- Leash your dog. This prevents stress or harm to the seal and possible harm to your dog.
- Clear the area. Do not allow people or dogs near the seal.
- Observe for any injuries or entanglements.
- Contact HBSRC (Hout Bay Seal Rescue) on 062 674 1521 Amos or 072 988 5183 (Kim/Tracy) 082 334 4247.
- Send a photo and pin location of the seal to the cell number, they will advise on further action.

DO NOT:

- Touch or approach.
- Never handle, feed or give water to a basking seal.
- Cover or wet the seal. This can cause harm; seals regulate their body temperature naturally.
- Force it back into the water, especially if it is a pup. This can lead to shock or drowning. And pups only learn to swim when they are about 5 months old.
- Harass or crowd, it is illegal to disturb seals.

RABIES

Recently it has been discovered that some seals have been affected by RABIES. This makes it even more important that they are not interfered with. Should anyone be bitten it is essential that the bites be flushed with water for at least 5 minutes. Even flush with sea water.

Do not scrub the wound. You can use soap or any skin disinfectant. Apply a clean dressing and seek medical help. It will be recommended that you have a course of rabies vaccines (into deltoid muscle) and rabies immunoglobulin (into each bite) and a tetanus vaccine. A course of antibiotics will also be prescribed.

Supply the hospital with a pin location of the attack and photo of the seal, if possible. It will be followed up by the State Vet. Please remember that the seals have as much right to be in the sea as we do. Wishing you a wonderful holiday.

Environmental affairs

RIKE VILJOEN



The SP Environmental Advisory Committee (EAC) collaborates with the Estate Manager to advance environmental initiatives aligning with the Trustee Committee's goal: "Control environmental impacts and optimize wildlife habitat."

Key focus areas include:

New House Construction: Mitigating environmental impacts during construction remains vital. Measures include pre-construction plant rescues and daily site monitoring by the BCO, with corrective actions for contractors as needed. Since January, 79 erven (approximately 4ha) have been cleared, contributing to habitat loss.

Encroachment on Communal and Coastal Property: There is an increasing number of encroachment guideline breaches by owners. Maintaining pristine Strandveld habitat is essential for local wildlife.

Construction and activities like gardening, dumping, and placing fish nets disrupt native veld and undermine past habitat restoration efforts. Owners must rectify transgressions to protect ecological integrity.

Invasive Alien Plant Control: Ongoing control of invasive species, such as Rooikrans, Prickly Pear, and Sisal, continues under NEMA regulations. Residents should avoid planting invasive species and opt for indigenous gardens suitable for the semi-desert climate. Lawns are discouraged as they lack ecological value.

Free-Roaming Cats: Hunting by feral and domestic cats harms local wildlife. Community members should sterilize and collar their cats, ideally with bells, and keep them indoors at night. Trap-neuter-return (TNR) programs help control cat populations. Feeding unowned cats is discouraged.

Fish Factories Air and Sea Water Quality: An EC representative attends quarterly public forums with local fish processing companies to address air and sea water quality issues.

Golf report

JOHN HUXTED

With the summer well on its way we can look forward to lovely summer golfing days, but unfortunately with the summer comes the wind!

Since the last newsletter a lot has happened on the course - we had our Spring maintenance in September. The greens staff work extremely hard over the 3 days tinning and seeding the greens, bunker maintenance, and various other tasks. The course is looking the best I've seen it in many years, thank you to Jaco and his team for a job well done.

In **September** the NG Kerk church held its annual golf day, 80+ players took part in a 2-ball scramble. The day was supported by many local companies supplying food and a well-deserved shot or two!

In **October**, Shelly Point Golf Club hosted 48 members of the SAGES Senior Golf Group for their second visit, with plans to make it a regular venue. This year also saw our first Matchplay league, held on the last Wednesday of each month, with the top 7 scores counted. Congratulations to Hennie Du Plessis, our first Matchplay League Champion.

NG Kerk church golf day



Photos courtesy of Danie Hefers



Hennie du Plessis
1st Matchplay League Champion

The planned Captains Charity Day on the **30th November** is looking to be a great day. This year's charity is the NSRI which is very close to a lot of our members and residents' hearts. With lots of local business signing up the day promises to be a great day. If any business owners would like to sponsor a hole, please contact the club Media Secretary Carl Frayne (083 420 3259).

December is a fun-packed month. To celebrate 25 years of the golf club, the golf committee have arranged a **gala dinner**. The event will take place on Thursday 12 December at the Community Centre. The event will feature a 3-course dinner, presentations and music. Booking details will be sent out on the golf WhatsApp group. Also, in December we have our annual Christmas fun day, "Santa's verses Elf's". With the Santa's taking a slim victory last year I'm sure the Elf's have something up their sleeves.

Shelley Point Social Events Club

ANGELIQUE DERMIT

We are thrilled to announce that the Shelley Point Social Events Club (SPSEC) (Not For Profit) previously referred to as "The Games Club", is now officially affiliated with Shelley Point Sports & Social Club. Being affiliated will add more stability to the club and with SPSEC being able to broaden their horizons offering residents much more than current activities.

MEMBERSHIP:

- It was decided by Shelley Point Sports and Social Club to charge the Shelley Point Social Events Club a (not compulsory) Membership fee of R120.00 per person, per annum.
- If you are interested in becoming a member contact Angelique Dermit (082 482 1741) for more information and obtaining a Membership Form.
- Fees payable will be directly to SPHOA and not to SPSEC.
- The managing members will remain the same: Angelique Dermit (Chairperson), Tammy Frayne & Veronica Vermaak.

As always we will encourage residents to send feedback from past events, and ideas of what you as residents would like to experience socially.



SHELLEY POINT SOCIAL EVENTS CLUB

CRAZEE RACE

PRIZE CHALLENGE

15 DECEMBER 2024

JOIN IN THE ULTIMATE FUN EVENT OF THE YEAR!

ASSEMBLE A TEAM OF BETWEEN FOUR TO SIX ADULTS.
(Adult Game: 15 Years & Older)

DON YOUR TEAM IN SOME PRIZE WINNING CRAZEE ATTIRE.
A CRAZEE MASCOT WILL DO YOU WELL.

Information & Bookings:
Angelique Dermit 082 482 1741



(Event dates to be confirmed due to finishes still in process in Multi-Function room)

6 December 2024
YEAR END "SHAKE UP" PARTY

15 December 2024
CRAZEE RACE. A popular FUN day for everyone. (Note, it is not a running race).

CONGRATULATIONS:

Tressa Porter; you remembered this fanatical day last year and won a BISTRO Breakfast Voucher. We are ready to receive your team's entry this year.

Shake up party



Join us as the SPSEC hosts a good old year-end **Shake Up Party** at the SP Community Centre, bringing our community together for an unforgettable evening filled with music, dancing, great friends, and a feast of delicious food.

With limited tickets available, be sure to book early to secure your spot and avoid disappointment! The event promises a lively atmosphere and warm company, perfect for ending the year on a high note. Please note, this event is restricted to those 18 and older.

Date: Friday, 6 December

Time: 18h00 - 22h00

Dress Code: Smart casual

Welcoming Leandi Klopper

Assisting the SPSEC with the Shake Up party, will be the new appointed Community Centre Manager Leandi Klopper. Some of you may recognize her from her time as Assistant General Manager at The Shelley Point Hotel.

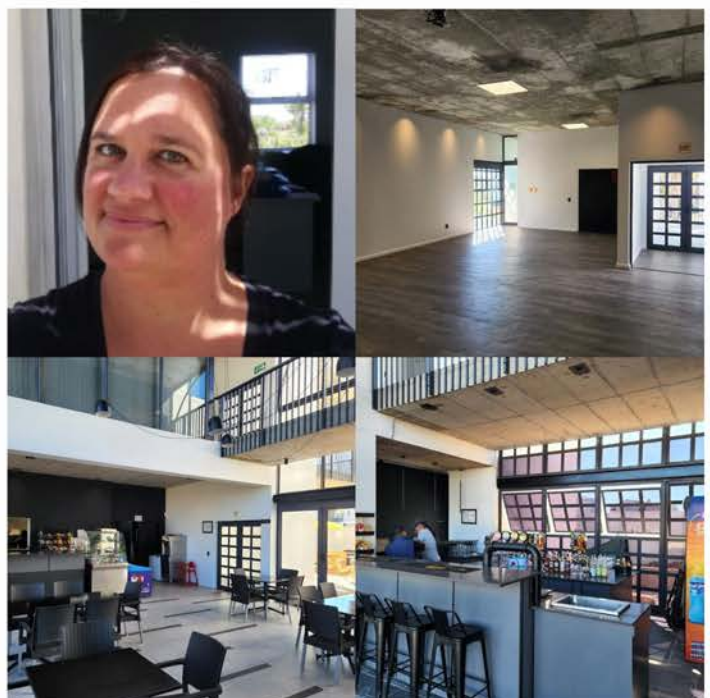
"After the events at the hotel, I accepted a role as Estate Coordinator in Lampiesbaai, where I gained valuable experience with HOA operations. However, my true passion remains in hospitality, so I am thrilled to take on the role of manager at the Shelley Point Community Centre.

I was born in Johannesburg, grew up in Bloemfontein and Somerset West, studied Tourism in Stellenbosch, and began my career with Protea Hotel before moving to the West Coast in 2019. I really look forward to reconnecting with Members and familiar faces."

One of the areas Leandi will be assisting with is the Multi-Function Room, which is there for the use of SP members. The venue features ten round tables (seating 8-10 each), 100 chairs, a projector, and an electronic screen, making it perfect for functions or meetings. Usage rules for the Community Centre are available on the [website](#).

Operating Hours:

- The Bistro: Mon-Sun 08h00-17h00
- The Bar: Mon-Sat 11h00-20h00; Sun 11h00-18h00
- Multi-Functional Room: 07h00-22h00



Murder mystery

ANGELIQUE MCDERMOT

If you ever wondered how good a detective you would make, opportunity came knocking via the SPSEC on 7 November. Six On The Case files were handed over to six teams with a total of 37 players' altogether. Case files with much attention to detail included realistic evidence such as photographs, police reports, statements, maps, fingerprints and newspaper articles.

As easy as it may look the cases ranged in difficulty level and players had only two hours to solve the murders. Well done Table 6 who solved their murder in just 20 minutes and the rest followed within the hour; however Table 2 truly had a difficult case and could not catch the killer by cut off time.

Our event dress up competition was won by Anthony Swartz as serial killer/forensic analyst Dexter and Amelda Swartz as the famous Daisy De Melker.



Garden competition

ANGELIQUE MCDERMOT

"The garden reconciles human art and wild nature, hard work and deep pleasure, spiritual practice and the material world. It is a magical place because it is not divided." *Thomas Moore*. A garden is a place of inspiration, peace, serenity, beautiful in the eye of the beholder and it comes in many forms. Whether contemporary, naturalistic, cottage style, monochromatic or Basque, we all have our own style of creativity to suit our garden mood.

The criterion for the competition judging was as follows:

- a) Suitability of design in relation to site and best use of space.
- b) Planting of variety of species, impact, range and diversity.
- c) Health and vigour.
- d) Maintenance, hard landscaping and accessories to the garden.
- e) Special spaces.
- f) Methods of recycling of natural resources, water and energy conservation.
- g) Habitat-friendly, edible garden.
- h) Overall feel and impression.

We thank the following sponsors for the prizes kindly offered:

FIJNBOS (St. Helena Bay) R 1 500.00 voucher | FIJNBOS (St. Helena Bay) Seeds and planter pots
SCOTT'S NURSERY (Vredenburg) R 500.00 voucher | DE VETTE POTTE (St. Helena Bay) Face Planter Pot
SPSEC (Shelley Point) Wine

Garden competition

After all entries received and allocated to their respective categories, photographs taken and judges tallying the scores the Winners were chosen:

OVERALL WINNER WINTER GARDEN: Hanneltjie Ras



MOST PROMISING GARDEN: Eone Van Rooyen



JUST MY SPACE: Koryn Stone



EDIBLE GARDEN: Amelda Swartz



SPECIAL MENTION OF OUR RESIDENT WHOM INSPIRES THE COMMUNITY THROUGH HER LOVE OF GARDENING:
Mariette Jearey



We have received many entries, and encourage all to enter once again next year, prompting more residents to enter as each garden is a haven and unique to itself.

SPSEC TEAM

Connecting with nature

ADVERTORIAL



One of life's simple pleasures is watching birds visit your garden. What better way to invite these creatures into our gardens by providing a safe space for feeding, creating moments of joy and connection with nature," Shelley Point Estate resident Rion Lerm, explains.

Bird watchers in areas like St. Helena Bay can expect to see a variety of local species, such as the Cape sparrow, Cape wagtail, Cape weaver, and the vibrant Southern double-collared sunbird. The Cape sparrow, known for its distinctive black and white markings, is commonly seen darting around in groups.

The Cape wagtail, with its slender build and characteristic tail movements, adds energy to any garden setting, while the Cape weaver's nest-building skills and yellow colouring make it a delight to observe. Meanwhile, the Southern double-collared sunbird, a small, vividly coloured bird, is particularly drawn to nectar feeders, showcasing dazzling colours as it feeds.

arcto currently offers two feeder types: a nectar feeder and a seed feeder.

The nectar feeder is specially crafted for nectar-loving birds, such as sunbirds. With a one-liter capacity, this feeder's design restricts access to bees and larger pests, making it a friendly setup for smaller birds. The feeder also includes a perch ring, allowing birds to pause and enjoy their visit. The sturdy build is easy to clean and refill, ensuring ongoing nourishment for visiting birds without much maintenance.

The seed feeder is built to control the flow of seeds, minimizes waste and limits access to larger birds that may deter smaller ones from feeding. The one-liter seed feeder helps keep the feeding process efficient, while its design prevents seed from spilling out, keeping gardens tidy.

By catering to the specific feeding habits of local birds, this feeder supports the natural ecosystem, encouraging people to take an active role in bird conservation through small actions in their own backyards.

For more information on arcto's products and how you can start attracting local birds to your garden, visit [arcto's website www.arcto.co.za](http://www.arcto.co.za).



Poker night

ANGELIQUE DERMIT



The evening of August 8 was eagerly anticipated by many, and it did not disappoint! This marked the first social gathering held in our newly established Shelley Point Community Centre, and it was met with great enthusiasm. The spacious venue comfortably accommodated the game tables, and while the acoustics weren't perfect due to the unfinished windows and bare floors, it didn't matter. Attendees were there for one main reason: to play and enjoy the night!

The scene was made even more memorable by the breathtaking view of the sun's golden rays setting over the golf course. With the help of Aldo and Anthony, we set up two tables to hold the generous buffet spread, which was welcomed.

Although the Community Centre rules don't allow guests to bring their own beverages, the bar prices were pleasantly reasonable. For a once-a-month outing with friends, it proved to be an affordable treat. All in all, it was a successful evening filled with fun, food, and community spirit.

4 x 4 x 48 challenge at Shelley Point

TERRY MACKINTOSH

The 4x4x48 event for the fit and adventurous is happening in Shelley Point, Easter 2025.

As described in the previous edition of the SPHOA newsletter, this gruelling event is the brainchild of fitness guru, David Goggins, a 50 year old ex-Navy Seal whose 4x4x48 challenges have become wildly popular all over the world. The challenge has inspired and mobilised thousands of people to test their physical and mental strength. It is not a race and there is no prize for first place. It's just about you doing whatever it takes to complete the challenge in the allotted time.

Basically, you will endeavour to complete twelve four kilometre runs (or walks) which will happen every four hours over a 48 hour period - 8am, 12 noon, 4pm, 8pm, 12 midnight, 4 am and repeat. It will take place on a 4 kilometre loop within the estate and for security reasons, will not be open to outsiders. However, homeowners, permanent residents and their guests or visitors are all welcome to participate.

As mentioned above, there are no prizes and no entry fees. However, if you would like to get a sponsor to donate funds to a charity of your choosing, that is entirely up to you.



There are so many deserving local charities which could benefit with a few extra rand. However, this is in no way obligatory. It will be your personal race!

If you would like to participate or require additional information, please contact me at didge28@gmail.com or WhatsApp 0766004641 and your details will be added to our circulation list. A get-together for interested persons will be held early next year at the Community Centre in order to answer any questions and concerns as well as to finalize arrangements.

Tennis

GARY ROODT

Stef and myself are looking forward to a great season of tennis. We encourage you to join the Tennis club as it is a wonderful way of keeping fit and meeting new people while absorbing the well-needed Vitamin D. The Tennis club is not only for Shelley Point residents, so if you know of anyone outside the Estate that are keen tennis players, please let them know.

The Tennis fees structure is on our [website](#). When signing up as a member there are no further fees payable, so you will be most welcome to play as often as you wish. You may join the Tennis club through the website or by requesting the Membership form by Whatsapp or emailing either Step Grosse (Stefan@sgaudio.co.za, mobile 082 920 6802) Gary Roodt (gary@capetownknitwear.co.za mobile 083 583 9493) or Ilse in the Pro-shop (Info@shelleypointcountryclub.co.za.) Looking forward to seeing you on the court.



Lawn bowls

DAVID RICHARDS



Over the past quarter, the SPHOA Lawn Bowls Club has set new records, welcomed a newly appointed committee, and launched an exciting lineup of events. As we look back on recent highlights, we invite members and enthusiasts alike to join us in celebrating our club's continued success.

At a recent club event, we proudly introduced our newly formed committee, responsible for planning, organizing, and ensuring the smooth operation of club activities. This dedicated team is already actively working to expand our event offerings, including quarterly themed gatherings and potentially a monthly skills development session.

We are also delighted to announce that our upgraded kitchen facilities are now fully operational. With the addition of a new urn, ample mugs, and a growing collection of biscuit tins, members can enjoy a well-deserved tea break during matches. This refreshment station aims to keep everyone energized, hydrated, and ready to play. There has even been talk of creating an award for "Most Improved Tea-Pouring Form" – though, for now, this remains unofficial.

On October 18th, our beloved green was transformed into a "beach" for our annual Beach Theme Bowling Day. Participants embraced the theme enthusiastically, swapping traditional attire for Hawaiian shirts, sun hats, and even a few inflatable beach balls and pools. Players bowled barefoot—a surprisingly popular choice—and awards were given for categories such as Best Beach Outfit, won by Dave (with his memorable beach attire). As for the title of Most Likely to Sunburn, it was humorously shared by all.

In summary, this quarter has been filled with memorable moments at the SPHOA Lawn Bowls Club. We look forward to seeing you at our upcoming events!

Keep calm, continue bowling, and don't hesitate to say hello to our club members practising their "bowling grip" with a melon or water bottle when around town! For those interested in joining the Shelley Point bowls group, please contact Butch at 076 502 7651 or Tia at 082 920 3487.

Bridge Club

TERRY MACKINTOSH

Thanks to donations from the local bridge community, the bridge club has managed to replace some, but not all, of the equipment lost during the hotel fire at the beginning of the year. So, the bridge club is re-emerging, slowly but surely. The Christmas Tournament is scheduled for Thursday 5 December and will be held at Port Owen Yacht Club this year while we await completion of Phase 2 of the Community Centre. Bridge players from all over the Western Cape will be attending the tournament and we are hoping that our Shelley Point pairs will do us proud. Results will be announced in the next newsletter.

During the first week of November, some of our local bridge players also participated in a small tournament held in a beautiful location on the Breede River, about 15 km outside Worcester. A great time was had by all who attended.

Finally, we are desperately looking for new players to grow our club. Unfortunately, some of our regular players have either passed away or relocated and as such, we would welcome anyone who would like to play, irrespective of skill level. We accept all bridge players from beginners to advanced and everything in between. If you are interested, please contact me - details in the newsletter directory.



Calling all bookworms



A new group was formed 2 months ago, for all the Book Worms in the estate. It is called the "Book Swapping Group". So far, we have 31 'Worms' and would love more of you to join us. We meet on the last Friday of the month at 16:00, usually at the Bowling Club tent. It is more informal than a book club, no in-depth discussions are necessary, just bring along up to 5 books and take the same number home with you. You may even bring along your favourite tippie and relax and get to know your fellow 'worms'. If you are interested in joining, please contact me. Fiona 082 585 2412.

Embracing the blues

EDITOR

Drawing inspiration from the Cape Town coastline, and our beautiful West Coast beaches, "Embracing the blues" is a perfect theme for a Summer Xmas.

Cape Town is synonymous with Delft-inspired patterns on tableware which reminds us of Dutch artistry and history. The exotic motifs on chinoiserie always adds a touch of sophistication and even a bit of nostalgia to any dinner table or beach picnic.

Long holidays can be challenging to keep little ones occupied, so why not involve them in creating table decor. We just love [this tutorial on decoupage seashells](#). Your kids will stay busy for hours and your Christmas decor will be sorted! Grown-ups may want to join in - it's just so much fun.

With touches of blue one can create a seamless beach atmosphere, adding natural elements such as shells, sand-dusted lanterns and white florals.



For your festive spread, think light and fresh—traditional Cape Town favourites like grilled seafood platters, crisp salads with seasonal fruits, and refreshing sorbets to end on a sweet note.

A crisp Prawn and Mango salad with loads of leafy greens will be a huge hit with your family. Or perhaps substitute the sugary trifle with a seven-layer prawn and pasta cocktail salad. Add a bit of fresh home-baked bread and a glass of chilled Chardonnay and you have the perfect Christmas meal. It's as easy as saying Merry Christmas. Feeling inspired? Then [click on this link](#) for the recipe.

Let the cool blue hues, ocean-inspired accents, and local West Coast food create an unforgettable summer Christmas filled with holiday spirit and good memories.

Poetry in motion

Shelley Point

**Where seagulls prey on hastiness
And time itself disjoins;
Where making plans is foolishness,
That there is Shelley Point.**

**Just beyond the Cederburg,
Far beyond dismay;
Deadlines hold no power here
In Saint Helena Bay.**

**A red sun rises and sets again
With not much in between,
Save the scatterings and gatherings
Of creatures rarely seen.**

**A fynbos sea meets the ocean blue
At a beach full of shells -
All of them skeletons true
All with a story to tell.**

**Gleaming houses rise from the ground,
Each like a white church
Of Relaxation newly-found
Their Eucharist: the earth.**

**A lighthouse blinks its shining eye
As deputy to The Moon,
Lest sleepy sailors go awry
And sail on to their doom.**

**Where Today is Tomorrow's twin,
Different but the same;
If you never get to visit,
That there would be a shame.**

- Niall Robert Hurley

I wrote this poem during one of my first trips to Shelley Point back in 2014. Being there gave me the sense that I was as far away as I possibly could be from the stress and pressure of life back in Johannesburg.

It was as if I'd stepped into a beautiful, quiet world where the very passage of time had been altered somehow - as if I had no choice but to be still and calm.

And to think my father and step mother had built their own house in this magical place! The feeling was so strong that I had to write about it.

Sometimes I wonder if the place itself compelled me to write it. Either way, this is the result. Happy reading!

- Niall Robert Hurley

Da Gama discoveries

THE EDITOR

8 November is officially earmarked as the date that Vasco da Gama set foot on land in St Helena, and the summer edition of our newsletter is perfect timing to delve a bit deeper into the history of our area and the founder of St Helena.

Residents and visitors would without a doubt have seen the Vasco da Gama Monument near Stompneus Bay, which was erected in commemoration of this discovery, by the Portuguese Adjunct Prime Minister Dr. Alfredo Vaz Pinto. The ceremony included South African Foreign Minister Dr. Hilgard Muller, Admiral HH Biermann, and local Mayor JA Bester.

But just who is this 20-year old that we owe the beginnings of our vissersdorpje to?

On 8 July 1497, the adventurous Vasco da Gama, left the Tagus River with 148 men aboard three ships: the Sao Gabriel, Sao Raphael, and Berrio, plus a supply ship. Da Gama commanded the Sao Gabriel, joined by Pedro de Alenquer, while his brother Paulo captained the Sao Raphael. After nearly four months at sea, they reached St Helena Bay on 4 November 1497, and Da Gama named the bay 'Bahai da Santa Elena' after Constantine the Great's religious mother.

The Da Gama monument features two sculpted *padrões* [Portuguese for 'columns', usually with crosses or in cross shape; singular form *padrão*, from the Latin *pedra* meaning 'rock'] with the Portuguese coat-of-arms, placed on a granite rock dome, gifted by the Portuguese government for the quincentenary of Da Gama's birth.

Da Gama was the first European to travel to India by sea. His voyages opened the sea route from Europe to the East, allowing Portugal to trade spices and other goods from the Far East.



Vasco da Gama died from malaria on December 24, 1524 in Cochin, India at a relative young age. Since his date of birth is disputed, his age at death is quoted as approximately 55–65 by several online sources.

His body was returned to Portugal for burial in the Jerónimos Monastery in Lisbon.

Da Gama is famous for saying: "I am not afraid of the darkness. Real death is preferable to a life without living."



Classifieds



Classified advertisements are available to all interested parties, whether residing in Shelley Point Estate or not. Help us to support local businesses and activities, and encourage a sense of community.
Rates: approx 30 words + logo | R60

[Click on this competition link to enter.](#)



Drop Away Plumbing

Plumbing and heating | Burst geysers | Burst pipes
Blocked drains | Leak detection | Maintenance on geysers on request. Contact Hannes Grobler.
Cell 072 197 3246 | dropawayplumbing@gmail.com



Marjac Construction

Marjac Construction established in St Helena Bay in 2013 with over 100 homes built. We focus on Design / Build / Bill of Quantities. Contact Jacques Gouws.
Cell 072 6404 983 | jacques@marjacconstruction.co.za
www.marjacconstruction.co.za



Sealtek Cape

Protect your home with Sealtek Cape's expert waterproofing services and products. We provide reliable solutions against leaks and moisture. Contact us at **sales@sealtekcape.co.za** to get your free quote today.
www.sealtek.co.za



HRW Property Group

Transform your home with HRW Property Group, an NHBRC-registered leader in renovations & construction. Experience quality craftsmanship & exceptional service. Contact us today for a free consultation:
sales@hrwpropertygroup.com. www.hrwpropertygroup.com



Fijnbos Nursery

Gardening is cheaper than therapy. And you get tomatoes!
Address: 608 Main Road, St Helenabaai. Cell 072 501 6567



KBS Property Group

KBS Property Group, resident property practitioners in Shelley Point offer expert guidance through the buying and selling process of your most valuable asset. Providing insights into market trends, property values and investment potential. **www.kbsprop.co.za**



DIRECTORY

Position	Name	E Mail	Telephone
Estate Manager	Aldo Fourie	manager@sphoa.co.za	066 529 5682
Administrator	Deirdre de Lange	admin@sphoa.co.za	022 742 1309
Security Manager	Daniel Plaatjies	ShelleyPointSecurity@servest.co.za	082 615 4883
Security Control Room	Controllers	NA	022 742 1380
			022 7421 888
			066 359 4273
Pro Shop /Club house	Ilse Lawrence	info@shelleypointcountryclub.co.za	022 742 1037
Golf captain	John Huxted	john.huxted1@btinternet.com	063 762 8034
Bowls captain	Butch Aldum	butchaldum@gmail.com	076 502 7651
Tennis captain	Gary Roodt	gary@capetownknitwear.co.za	083 583 9493
Bridge captain	Terry Mackintosh	didge28@gmail.com	076 600 4641
Shelley Point Social Events Club (SPSEC)	Angelique Dermit	Office.dermotech@gmail.com	082 482 1741
Water Safety Initiative	Adrian Oelofse		082 240 9909
Community notice board	Chris Roberts	chezroberts@mweb.co.za	076 783 2035
SA Police Service	St Helena Bay		022 736 8060
SA Police Service	National		10 111
Ambulance	National		10 177
Cell Phone Emergency			112



WHATSAPP GROUPS SPHOA Members WhatsApp Group Administrator: Aldo Fourie | 066 529 5682

Please note: The SPHOA Members WhatsApp Group is the official social media platform for the Estate and is intended for the distribution of pertinent information to all homeowners and long-term residents. If you are not on the group and wish to be, please contact the Estate Manager, Aldo Fourie so that you can be added to the group. Please note also that information and commentary on WhatsApp groups or other social media groups does not necessarily reflect the opinions of Shelley Point News, SPHOA or the Shelley Point Management team and may not be endorsed by them.